



Illinois App

Smart Healthy Communities Initiative

WILLIAM SULLIVAN – Professor and Director, Smart Healthy Communities Initiative

MEL FENNER – Associate Director, Health Technology Innovation

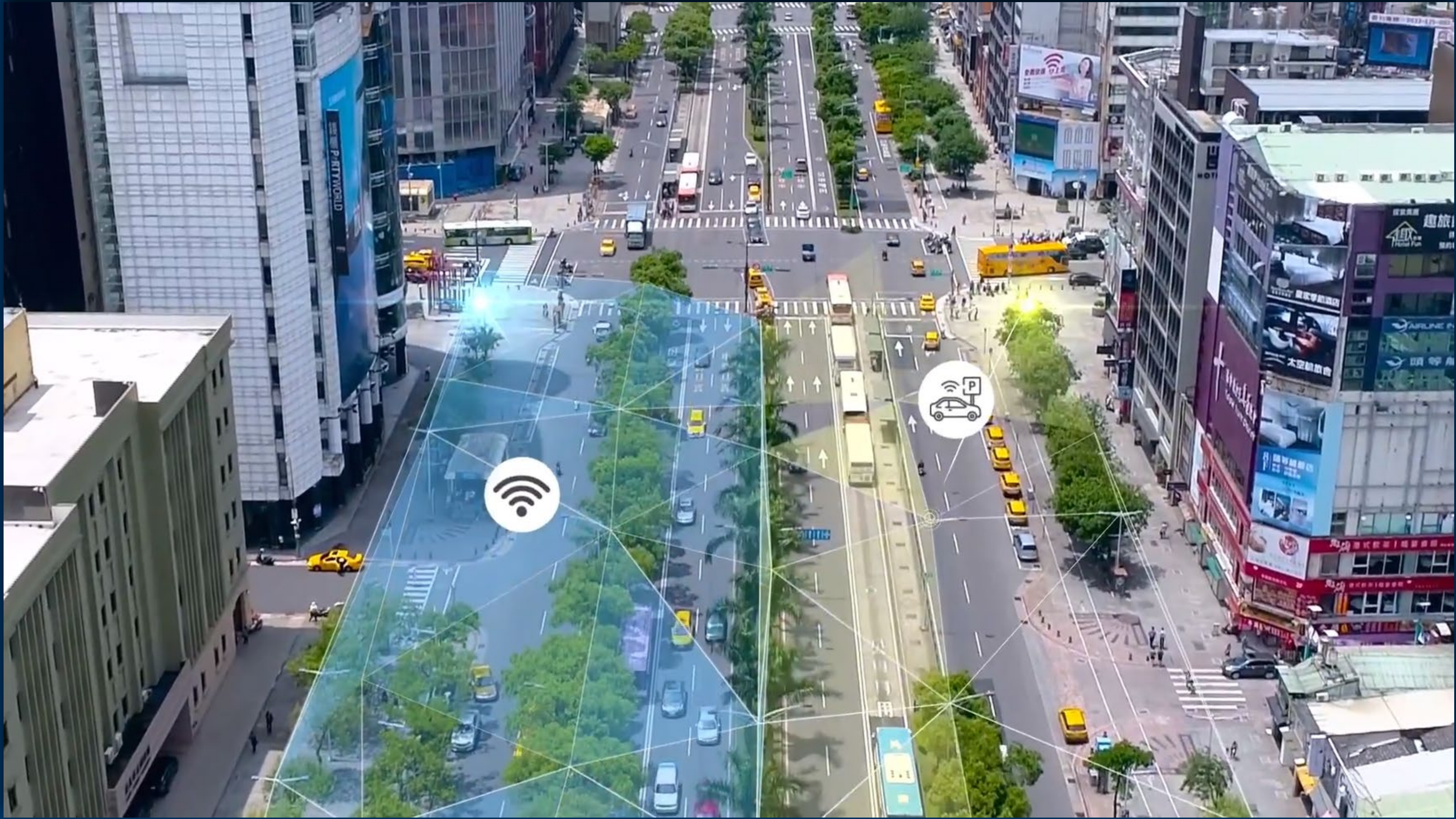
KATHRYN COURTNEY – Associate Director, Business Innovation Strategy

This Afternoon

- What is Rokwire?
- Who makes Rokwire?
- What is the Illinois app?
- How can you participate?



WHAT
I ROKWIRE





Goals

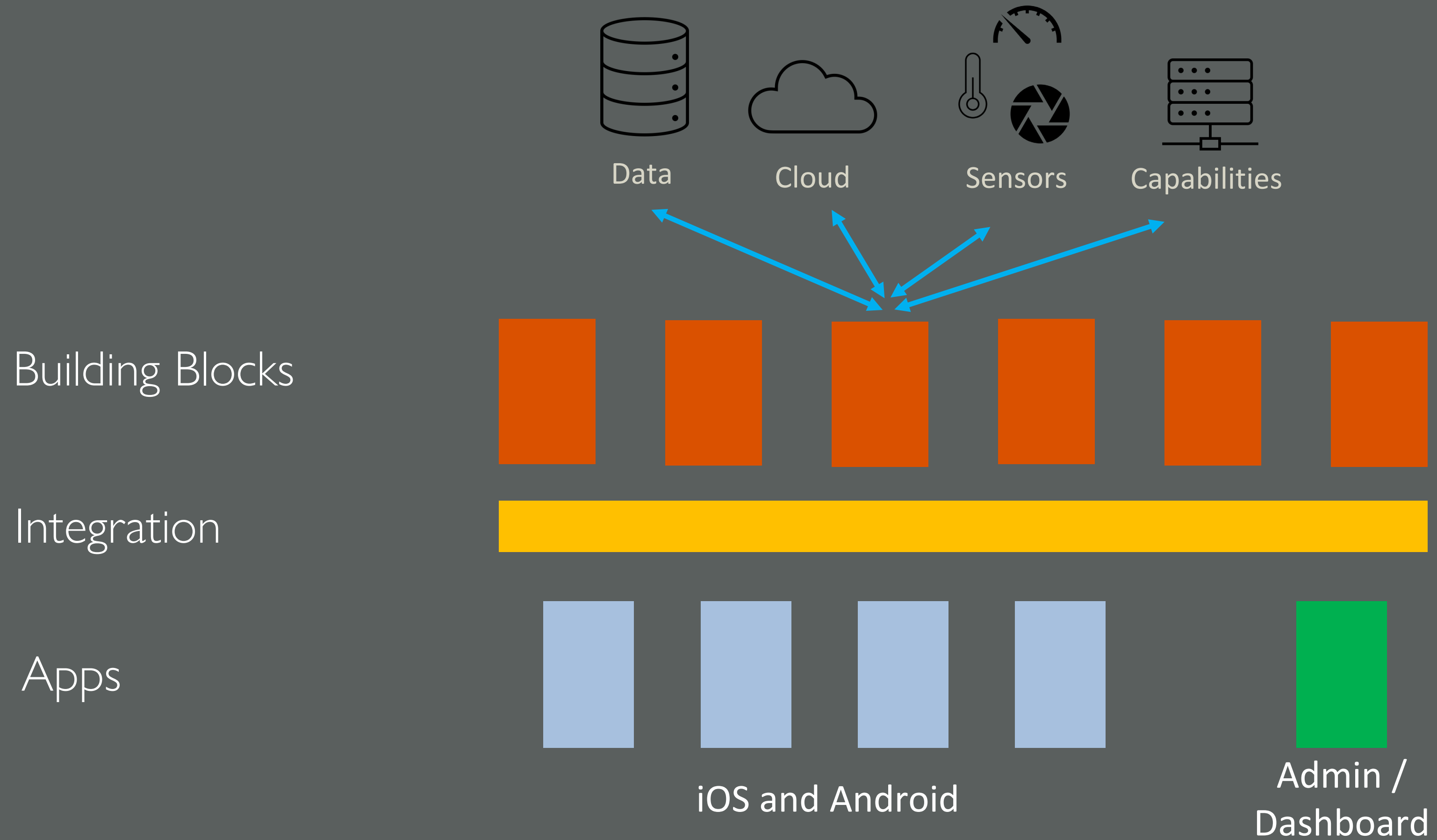
- Enhance human capabilities
- Create healthier, safer, more equitable, sustainable places
- Foster better decision-making
- Fuel innovation

I ROKWIRE

- Launched in 2018 on campus
- Integrate IoT, sensors, devices, cloud
- Privacy-first design
- Licensed for free via Apache V2.0
- Supports multiple apps

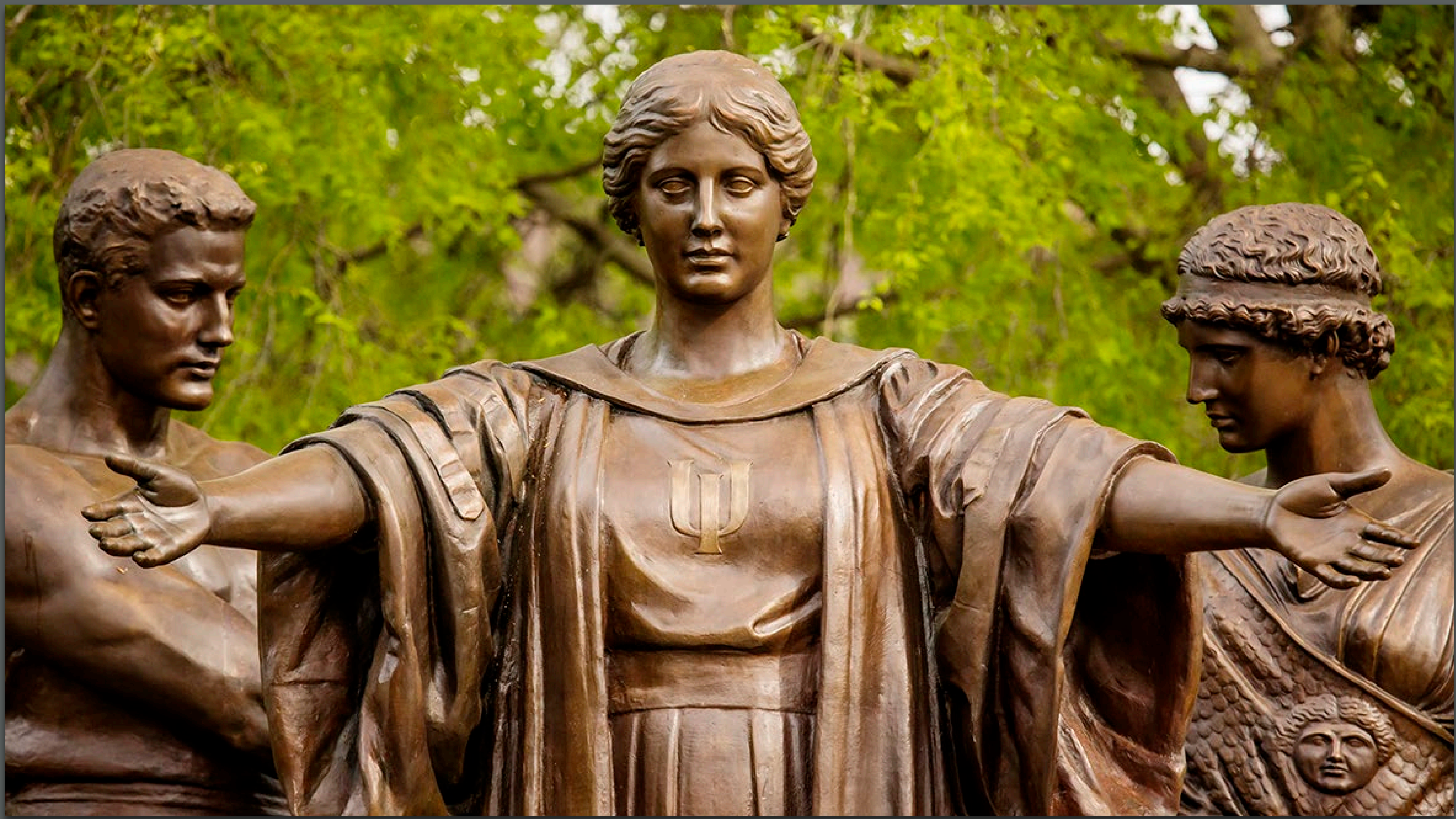


ROKWIRE SYSTEM



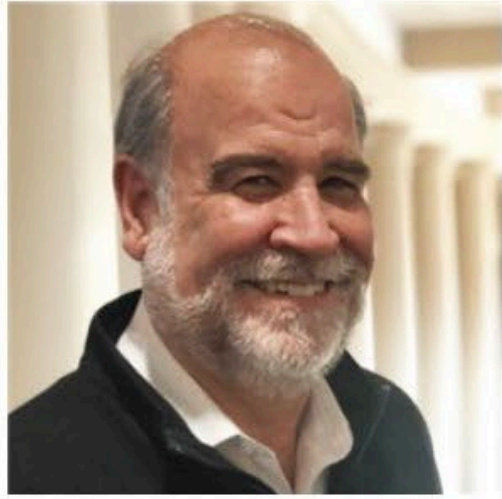
A dark blue background with a network diagram consisting of several dark blue circular nodes connected by thin, light blue lines. The nodes are arranged in a roughly circular pattern, with some lines extending towards the edges of the frame.

WHO
I ROMWARE
S





William Sullivan
Director



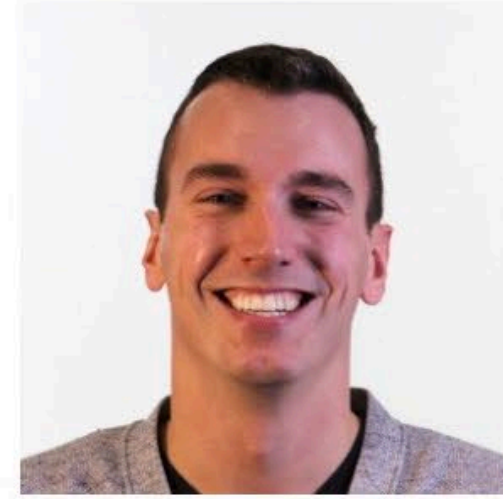
John Paul
Chief Instigator



Mel Fenner
Associate Director, Health
Technology Innovation



Kathryn Courtney
Associate Director, Business
Innovation Strategy



Nick Vance
Manager of Data and
Technology Innovation



Vanessa Burgett
Design and Research
Product Lead



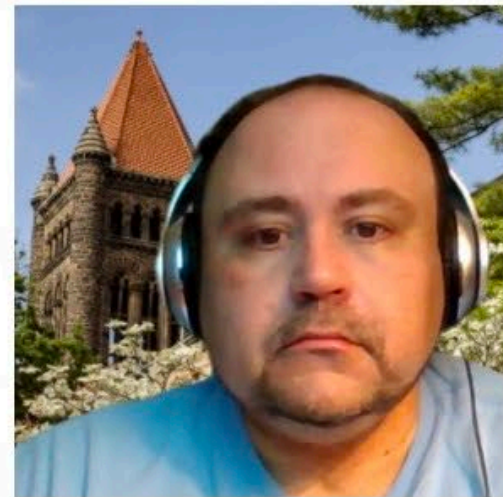
**Sandeep Puthanveetil
Satheesan**
Technical Lead (Platform
Development)



Mary Stevens
Senior Architect



Joe Grohens
Communications Director



Bradly Alicea
Community Manager

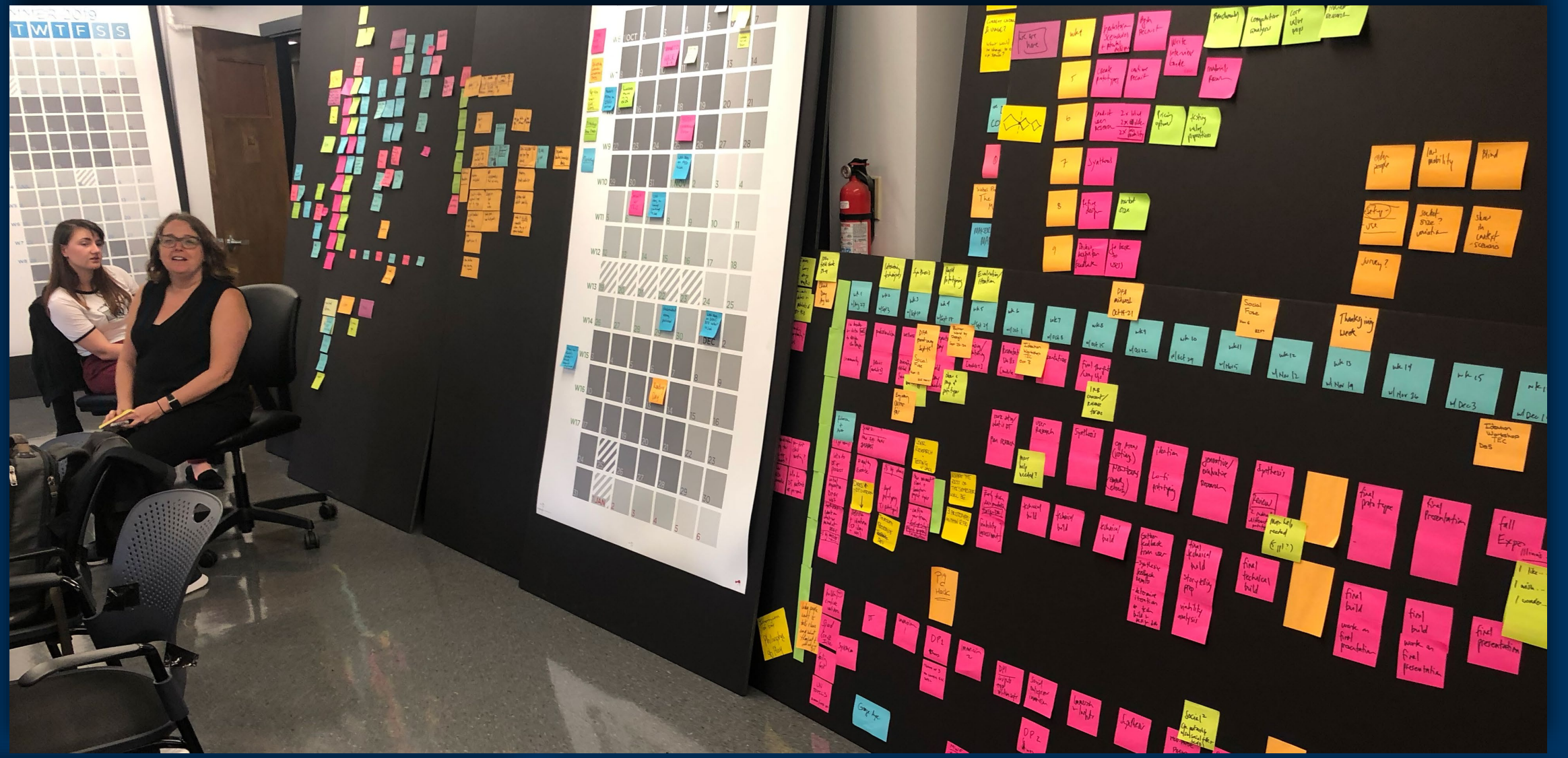


Todd Nelson
Project Manager



Gloria Jackson
Office Manager















Mel Fenner, PhD
STUDENT AFFAIRS TECHNOLOGY





WHO IS ROKWARE

Inside the UI

Smart Healthy Communities

Initiative

Student Affairs

Technology Services

Siebel Center for Design

Colleges

Outside the UI

Vendors

Inabyte

Pixo

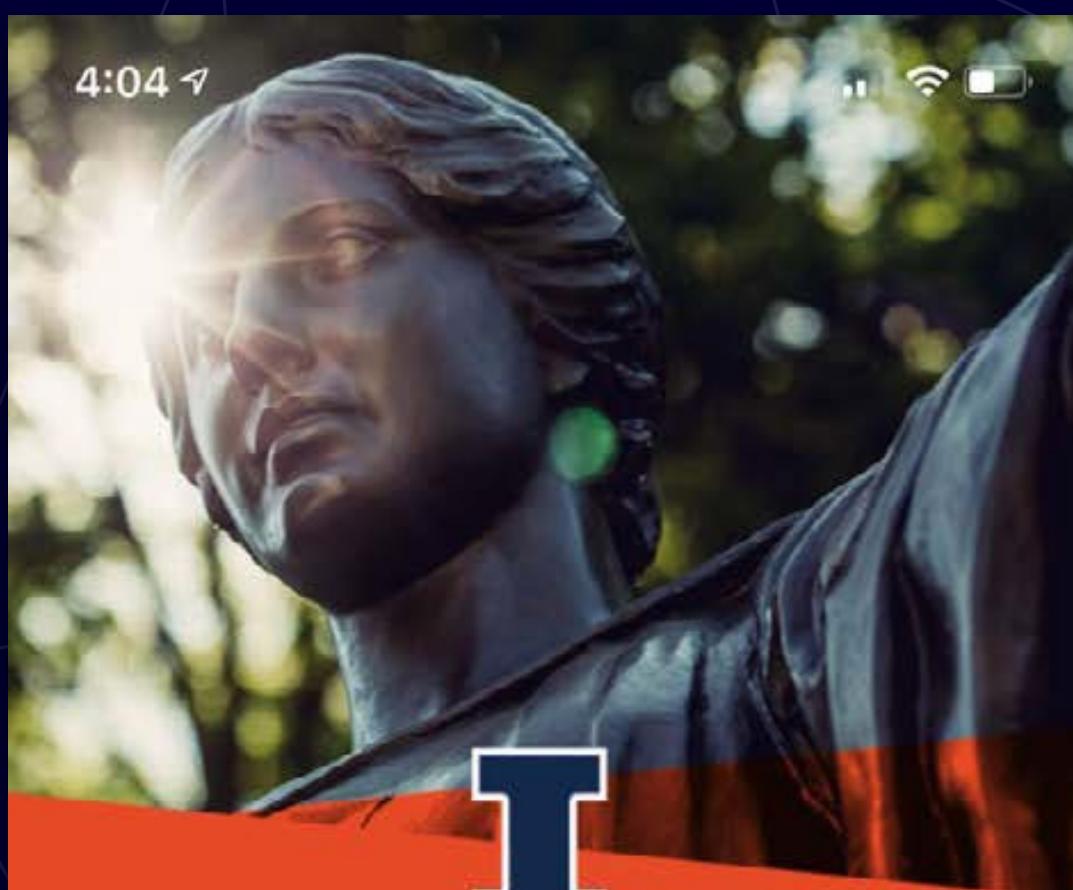
Open-source contributors

Rokmetro



How has Rokwire been used
and how is it being used?

4:04



WELCOME TO
ILLINOIS

Get personalized
recommendations for the
University of Illinois



THANK YOU
HEALTHCARE
WORKERS!



**Safer in
ILLINOIS**

POWERED BY
I ROKWIRE

Get started



Join the fight against COVID-19

Track and manage your health to help
keep our Illinois community safe

Continue



How it works

Testing and limiting exposure are key
to slowing the spread of COVID-19.

You can use this app to:

- Provide any COVID-19 symptoms you experience
- Automatically receive or enter test results from your healthcare provider
- Allow your phone to send exposure notifications to you and the people you've come in contact with during the last 14 days

Next

An aerial photograph of a city, likely Madison, Wisconsin, showing residential buildings, trees, and streets. The image is overlaid with a semi-transparent blue filter. Centered on the image is a large, bold, red letter 'W' with a white outline.

W

**SAFER
BADGERS**

POWERED BY **ROKMETRO**

OSF OnCall[®]

CONNECT

POWERED BY **ROKMETRO**

Continu
e



WHAT IS THE Illinois App?





CURREN
FEATURES

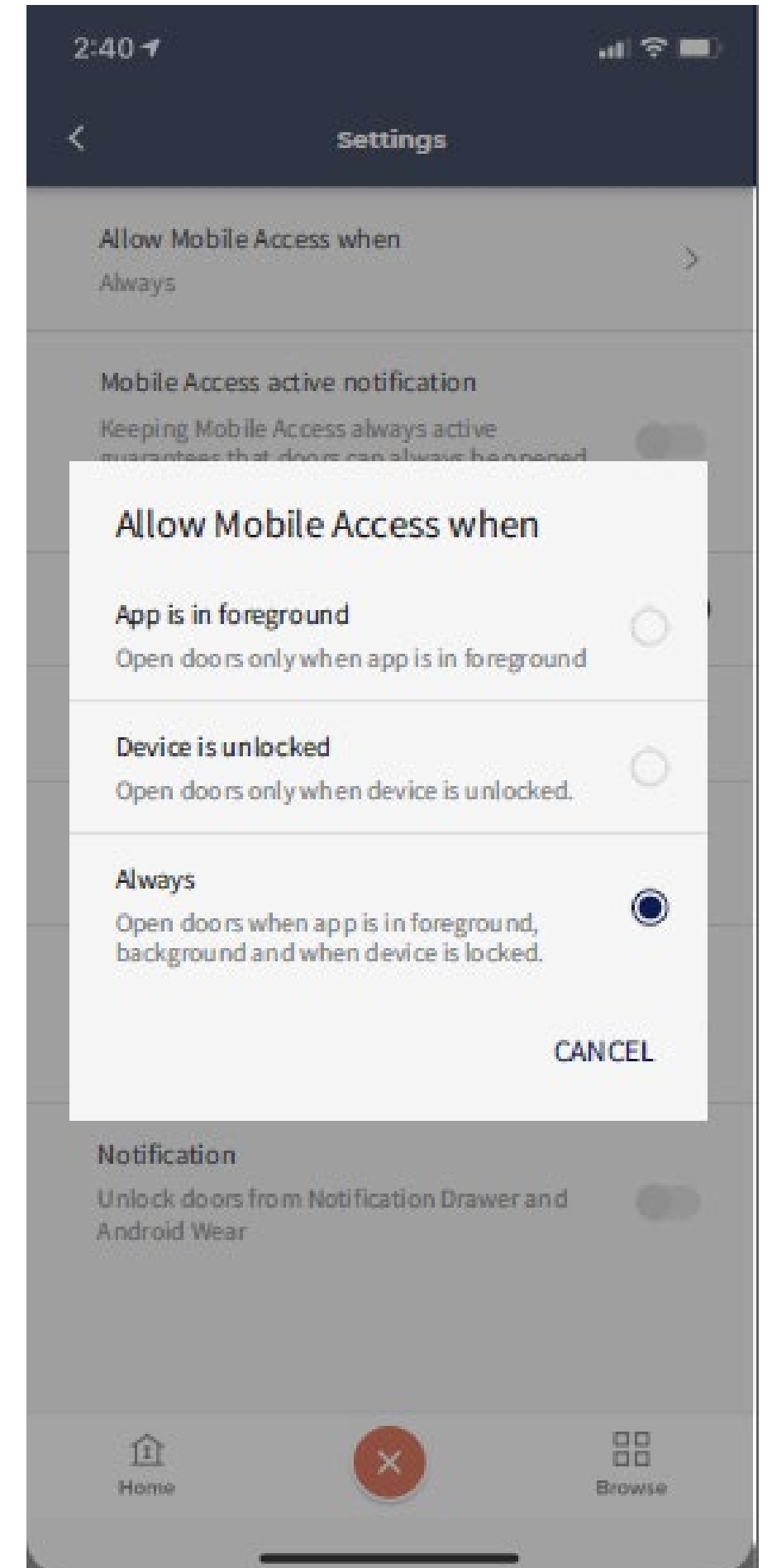
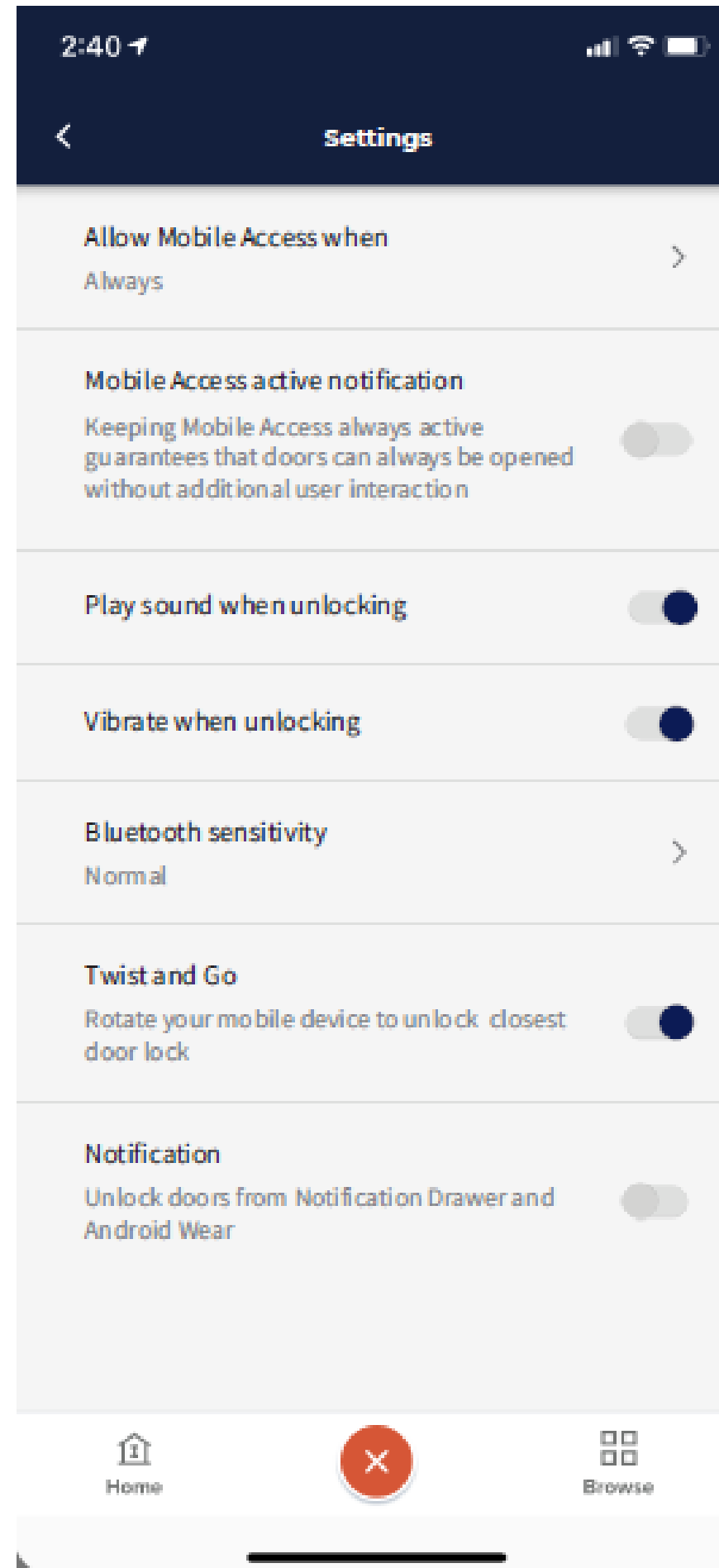
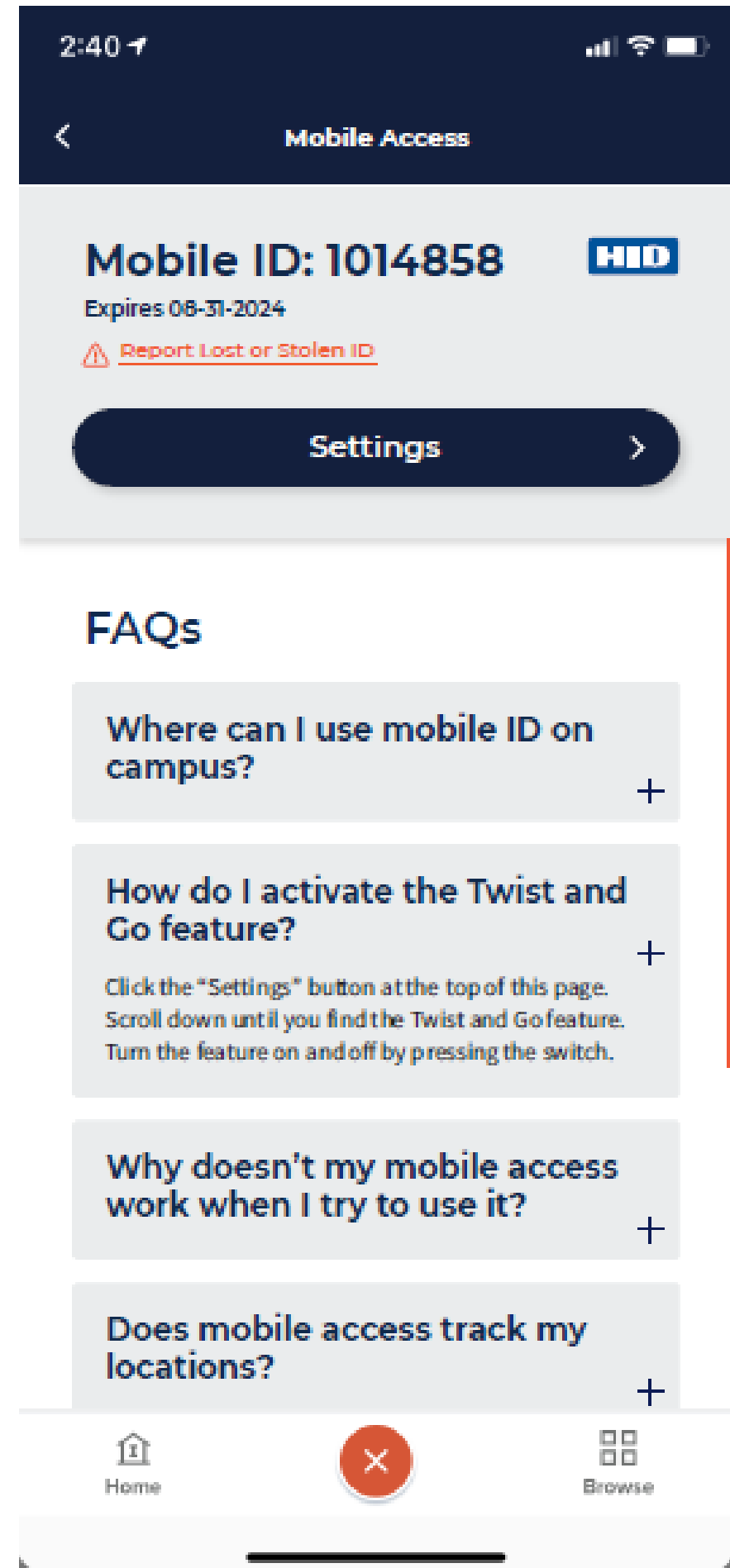
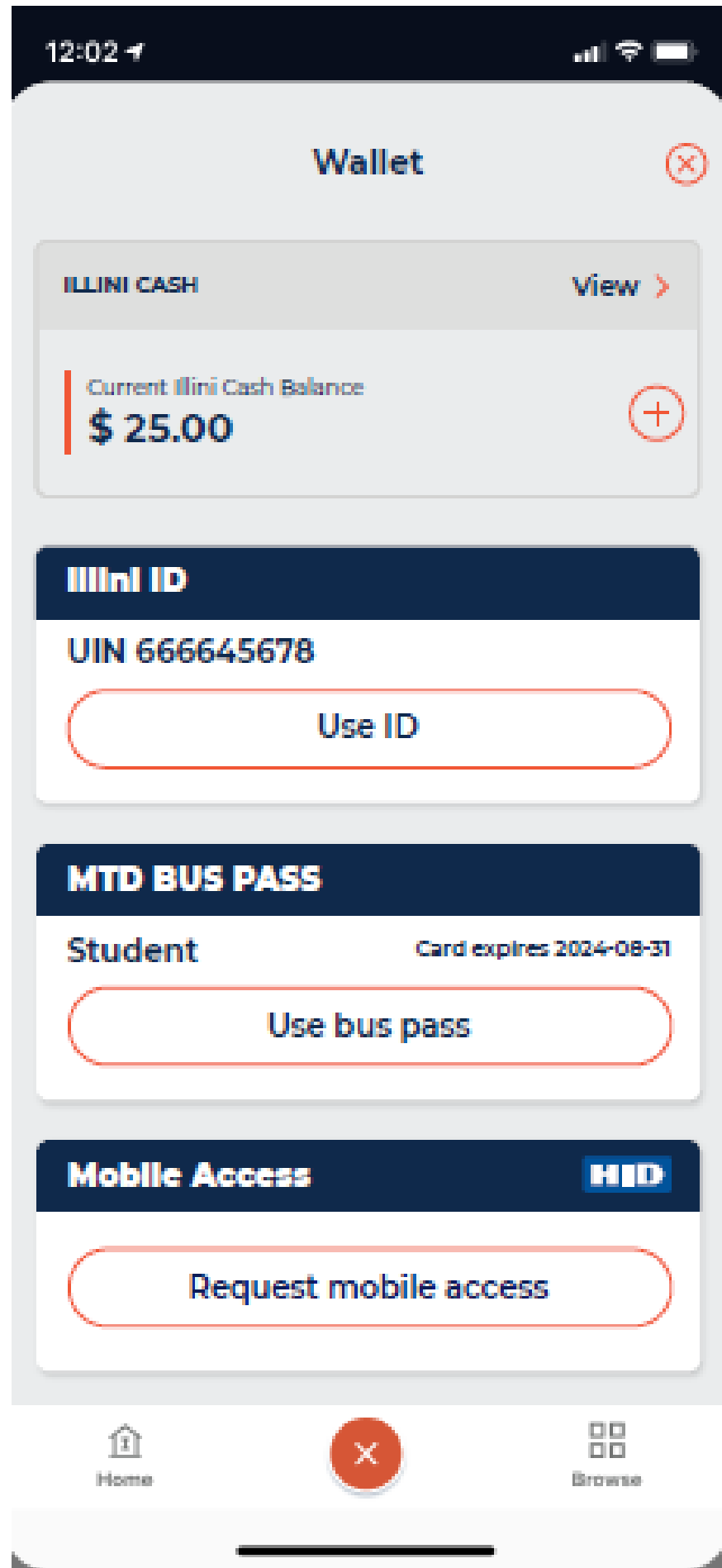


What's next?

What features are coming soon?

- Health and wellness
- Integration with most-used features of Canvas
- Integration with Campus Recreation
- Others

Mobile Credentials



Experience Journey With Wellness Woven Throughout the App



Collector

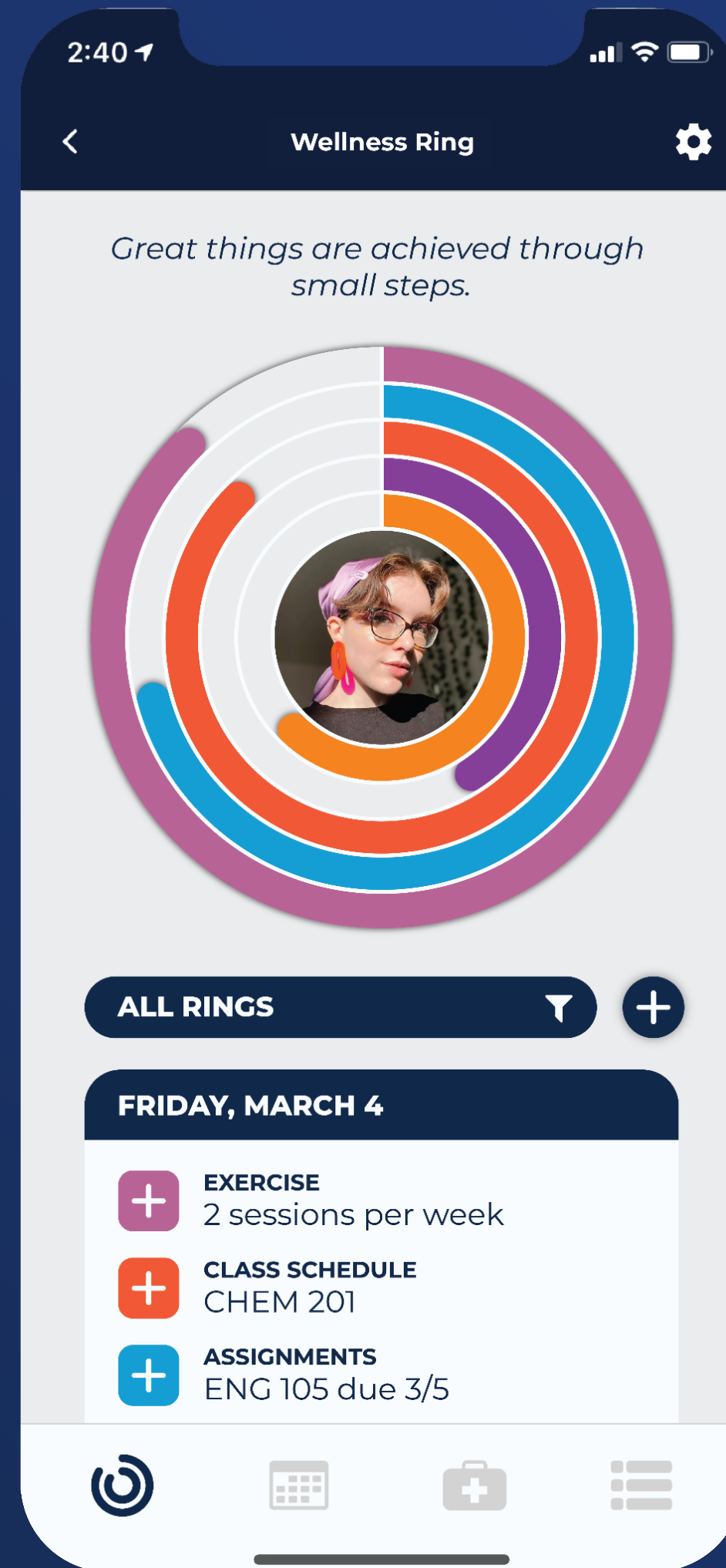
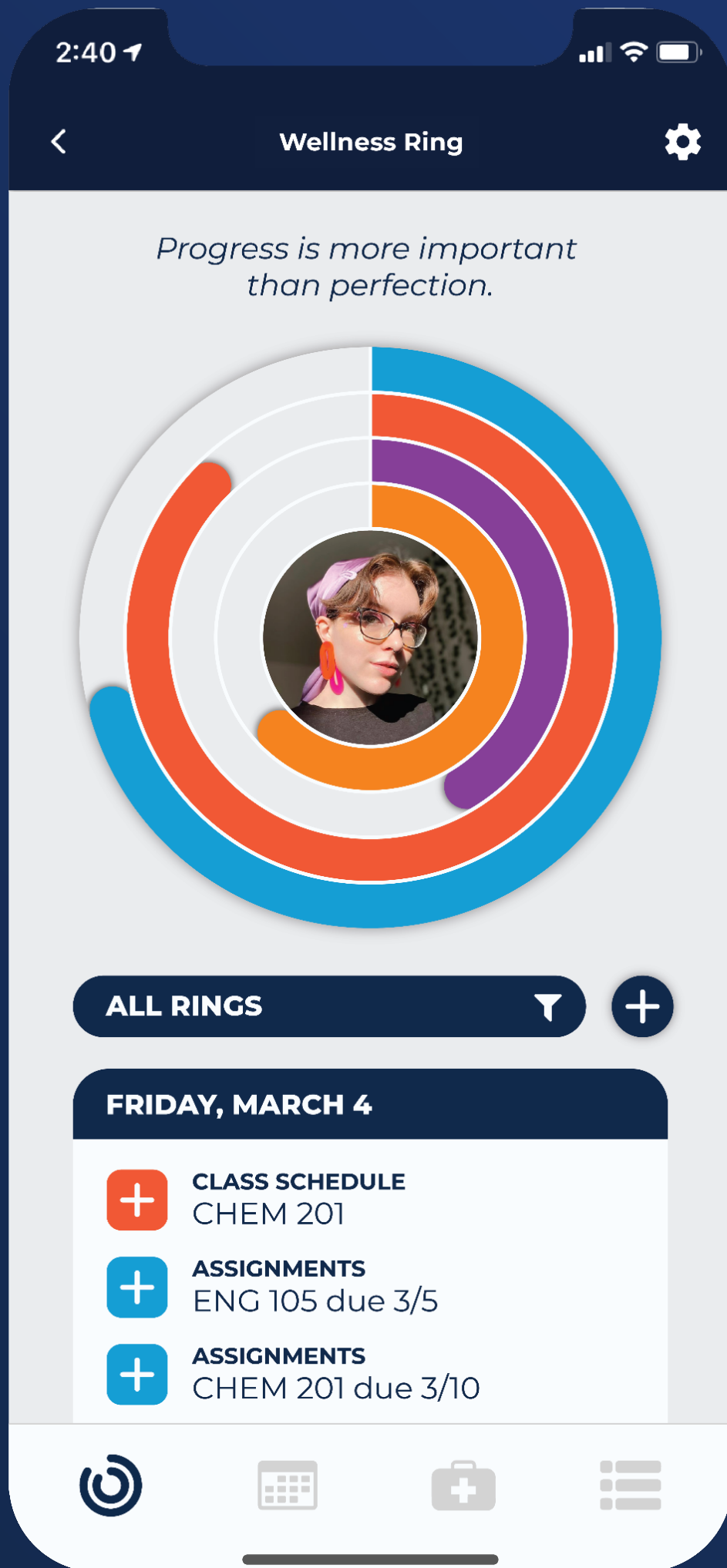
Gathers information from and about students to help personalize their university experience.



Opportunities

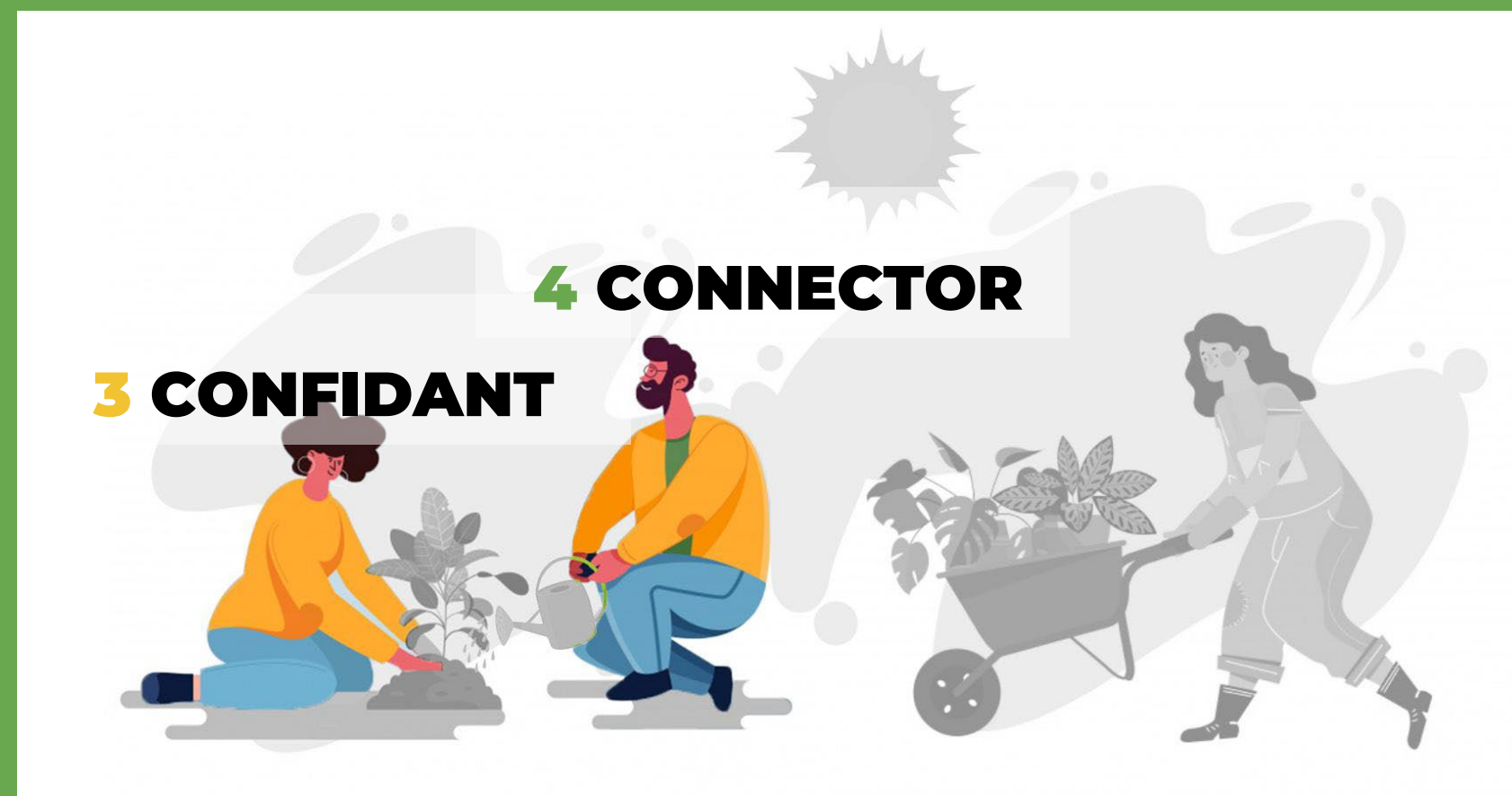
How might we:

- *Gather information to customize each students' experience in the app based on their unique goals, needs, and struggles?*
- *Encourage students to reflect on their plans and identify areas they want to focus on?*
- *Set a student-first tone from the very first interaction with the app?*



Confidant & Connector

Provides a safe space for students to express struggles & guides them to appropriate care



Opportunities

How might we:

- *Create a one-stop-shop for all student questions?*
- *Make space where students can feel comfortable disclosing the things they are struggling with?*
- *Help students find the appropriate level of care that they need?*
- *Assist students with every step connecting with that care?*

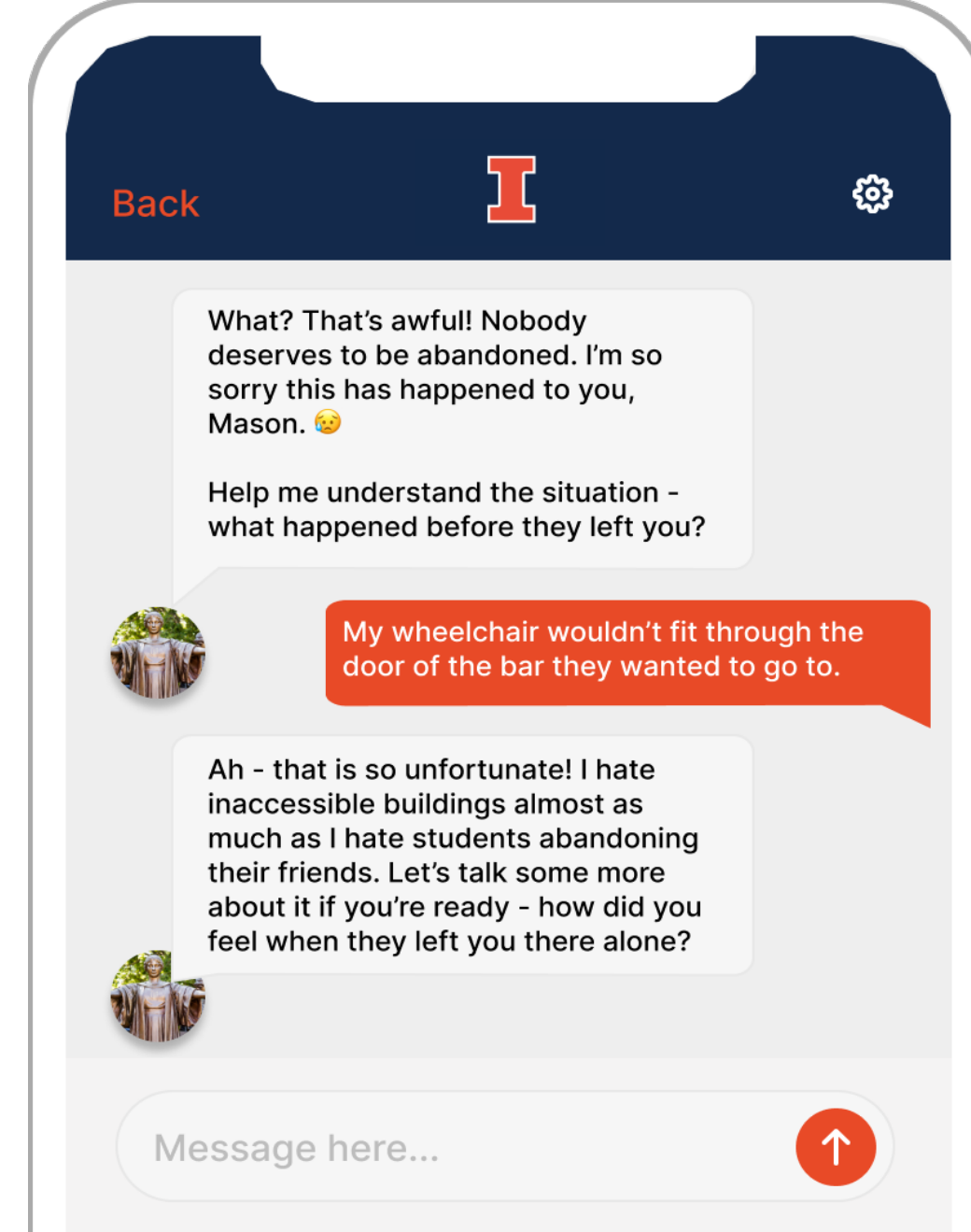
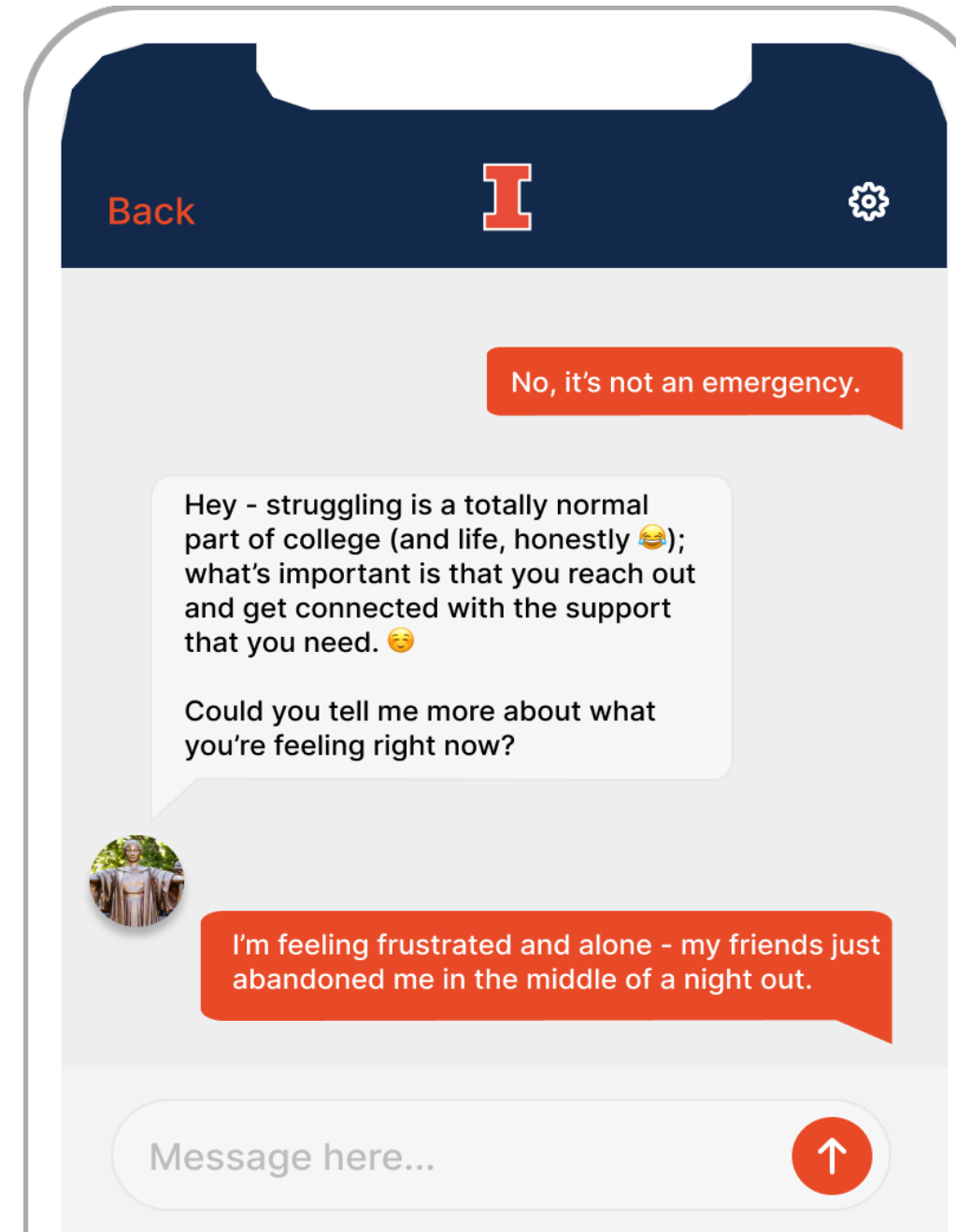
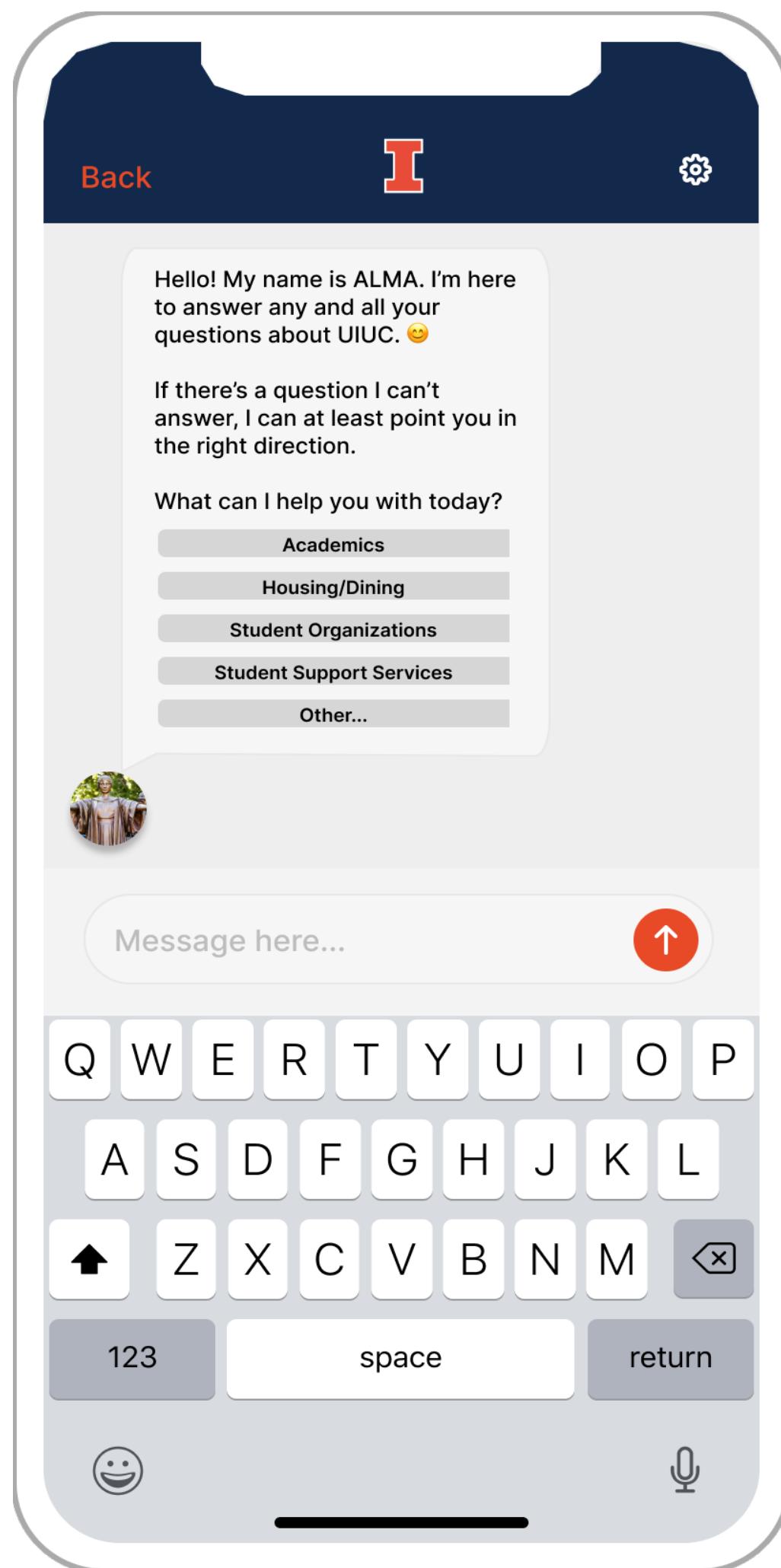
Confidant/ Connector

Ask Alma Chatbot

A **general Q&A bot** for all things UIUC.

In absence of an available answer, **connects student with correct office/person.**

Could be powered by **existing efforts** around Q&A chatbots - **“Ask Alma” Task Force** and **AIMS Chatbot.**



(As much as possible) is able to conduct **simple triage** and ask follow-up questions with **validating and affirming language.**

Cohort

Facilitates socialization and in-person experiences between peers and mentors.



Opportunities

How might we:

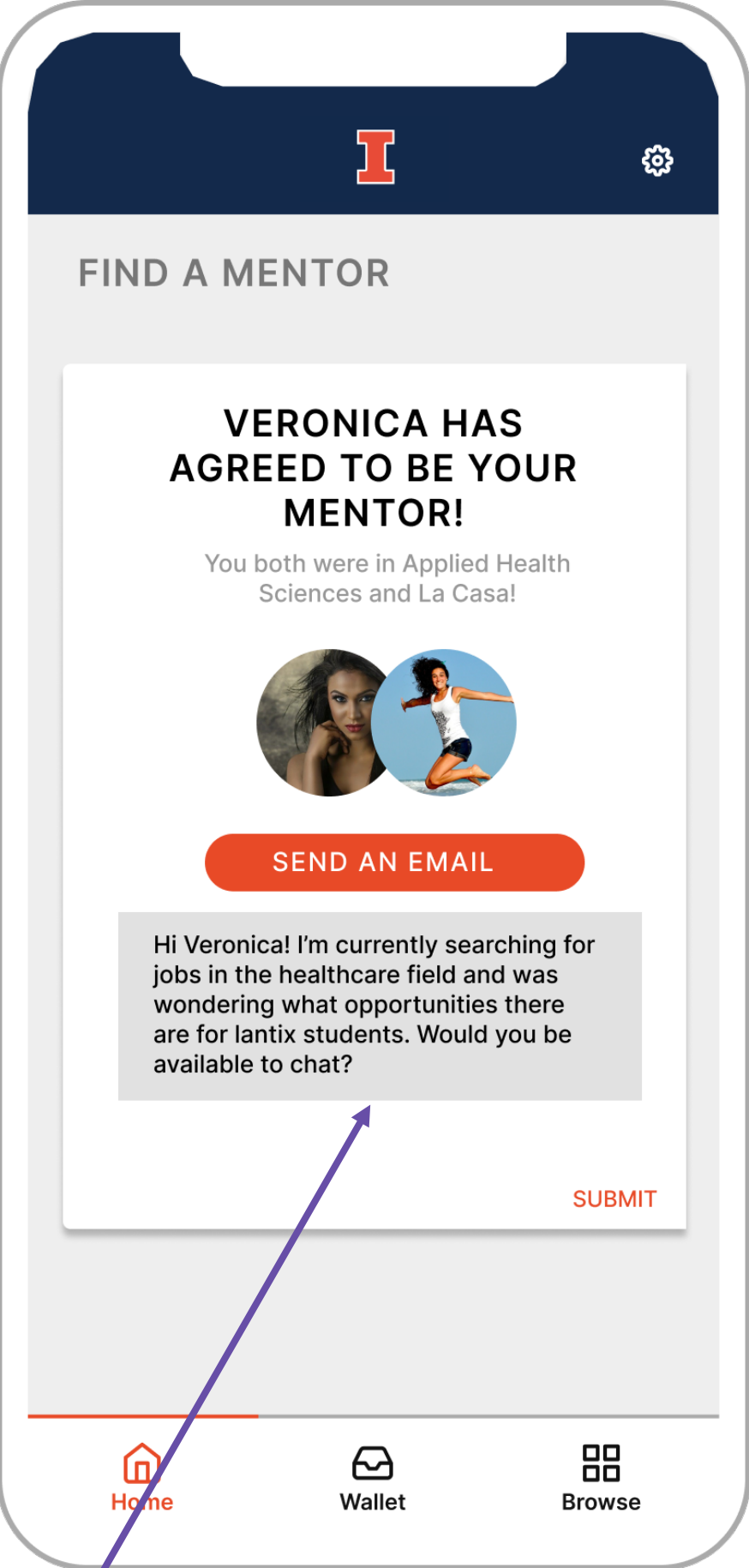
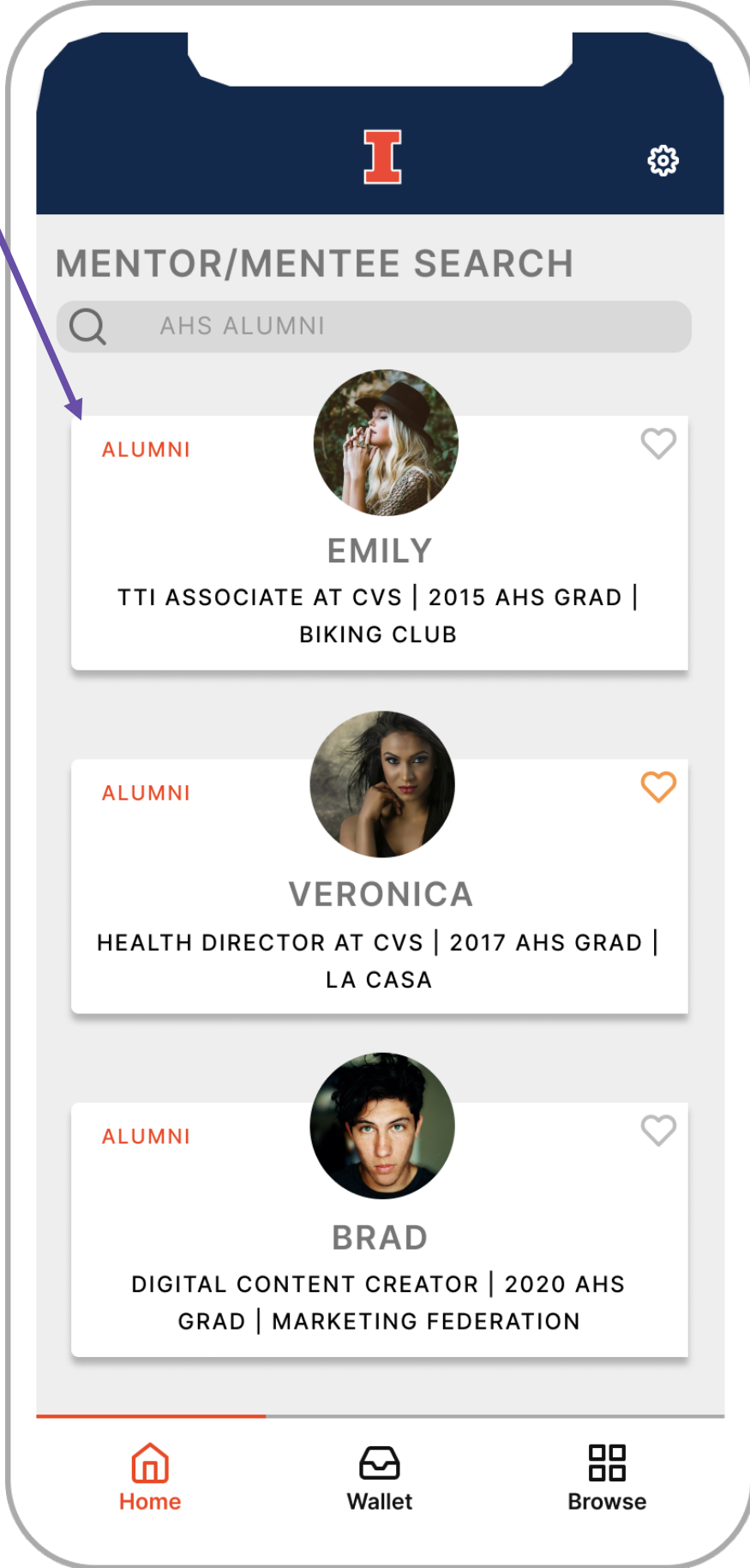
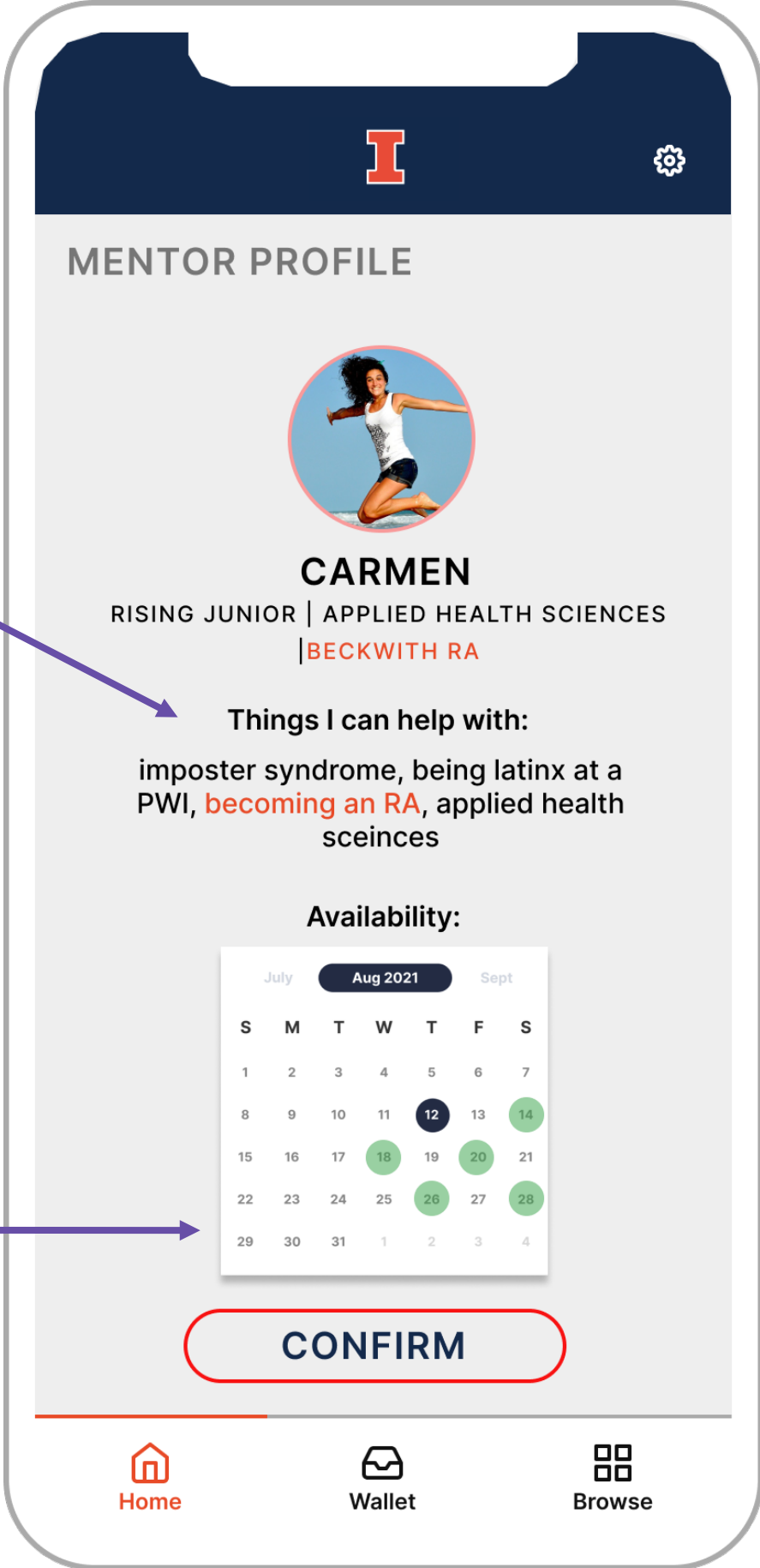
- *Create channels for students to find and connect with other students over shared interests or goals?*
- *Facilitate the coordination of peer-to-peer mentoring?*
- *Facilitate the coordination of faculty, staff, and/or alumni mentoring?*

Cohort Mentoring Connections

Making it easier for students to connect with alumni creates an **opportunity for alumni to positively engage** with the university.

A list of unique experiences that indicate **the areas of mentorship** student can help with.

Easy access to a mentor's schedule and availability **lowers the barrier to reaching out.**



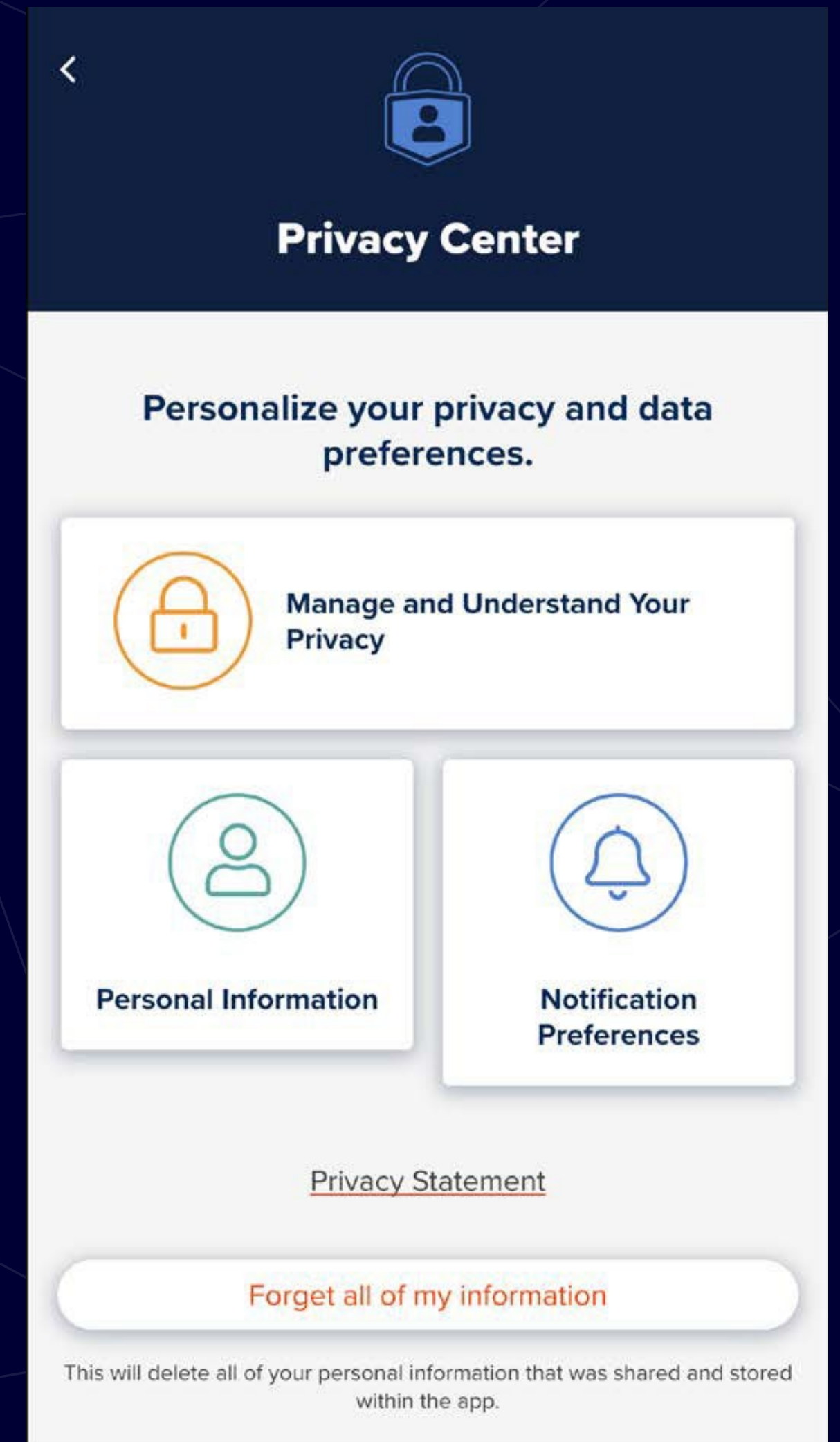
Expectations are set by the student and the mentor.

Who provides oversight to the Illinois app?

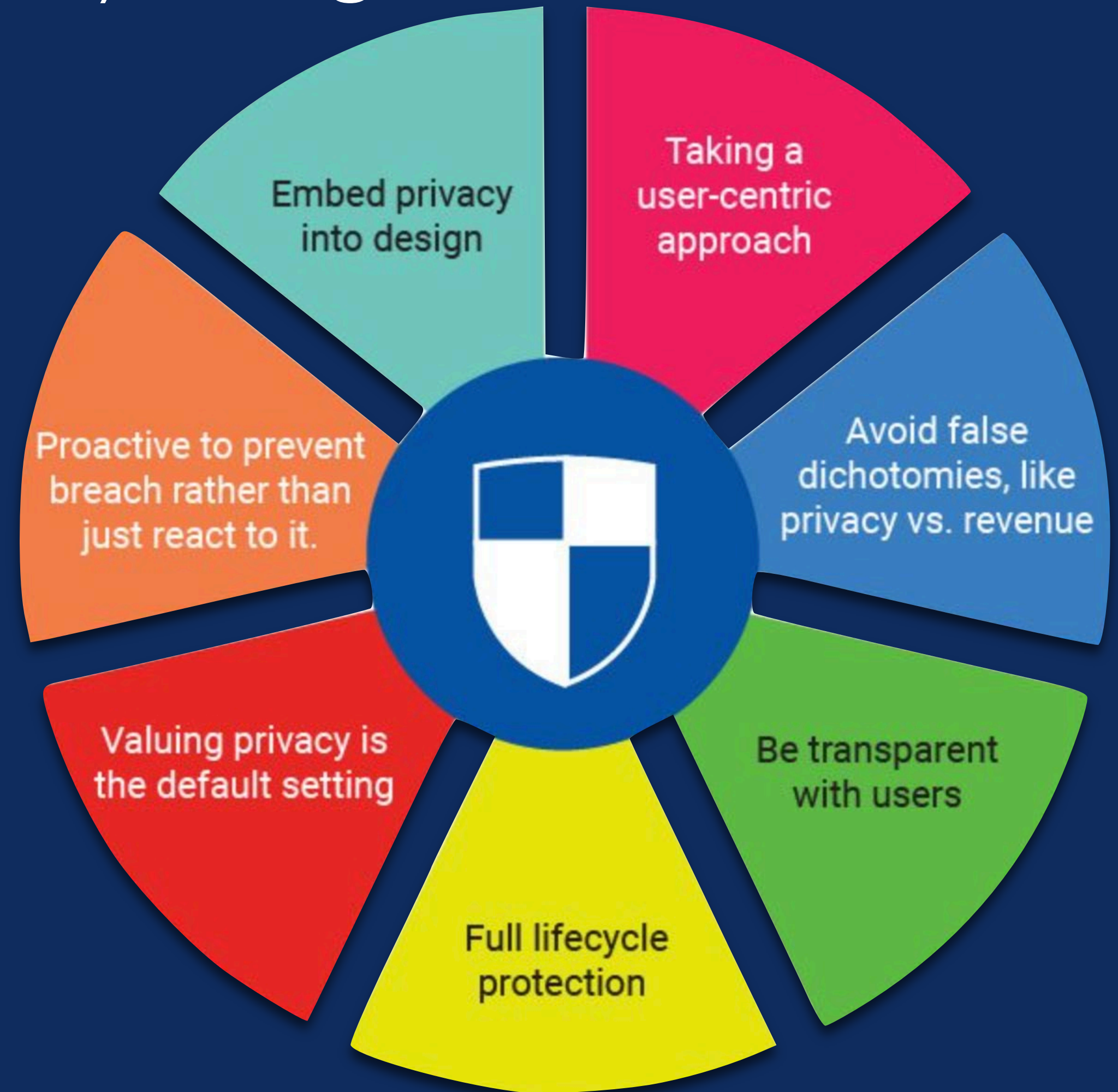
- Illinois App Steering Committee
- Data Governance Committee

How do you deal with privacy and security?

- Privacy by design
- You control your data in the Privacy Center
- Conform to all University of Illinois security standards

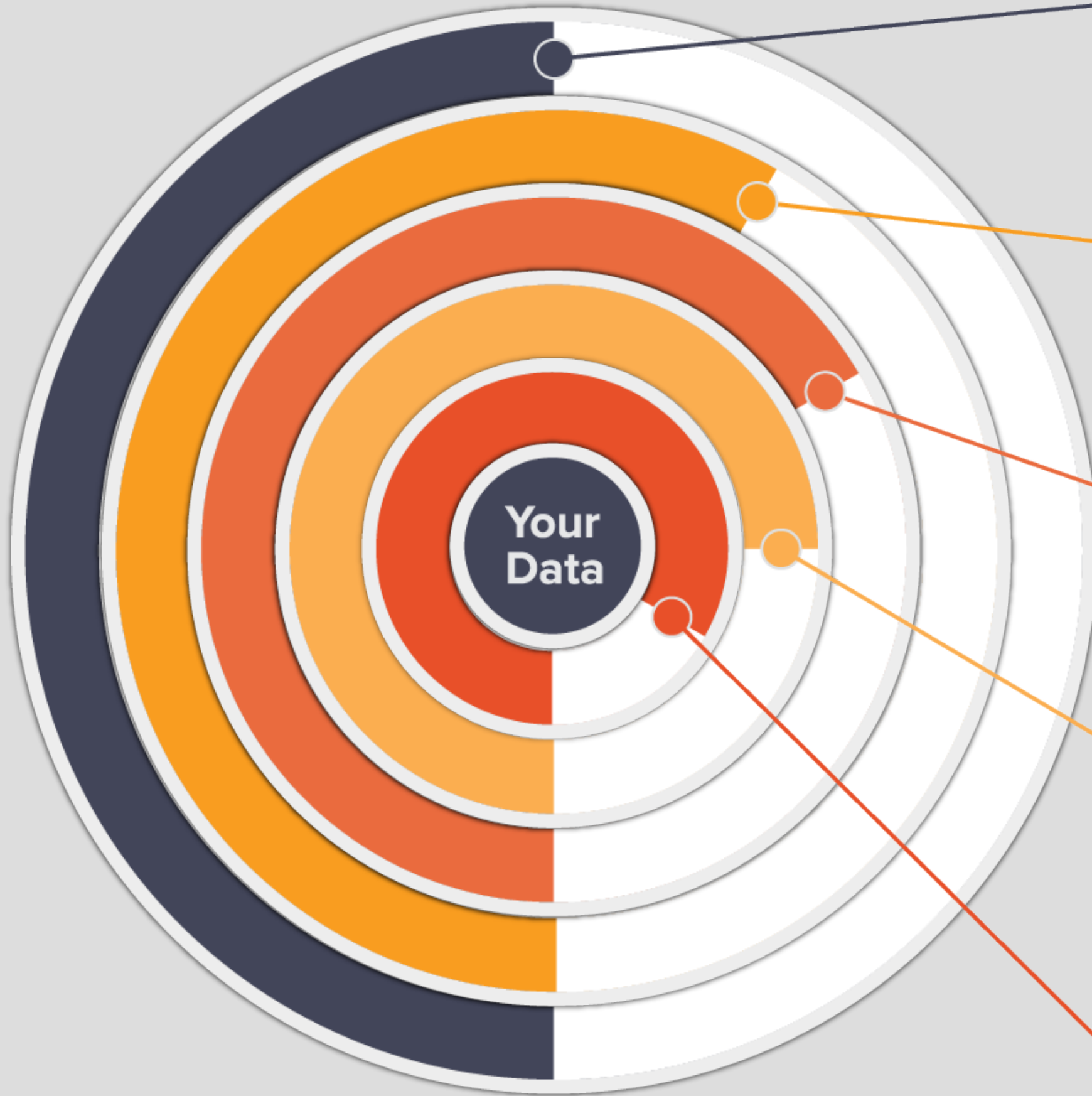


Privacy by Design



Illinois App Data Security & Privacy

Five Layers of Security Protect Your Data



System-Wide Security Management

- A robust world-class cybersecurity infrastructure protects privacy throughout the organization

Encrypted Data

- Encrypted in storage
- Encrypted in transit
- Decrypted on your phone only

De-Identified Data

- Device identifiers and personal information are removed from personal data before it is transmitted.
- Anonymized data from the Covid-19 Info Center cannot be traced to your identity or your device.

Control Your Privacy

- Choose privacy levels
- Revoke information sharing, delete information at any time

Protect Your Device

- Lock your screen with passcode and physically secure your device.



UNIVERSITY OF
ILLINOIS
URBANA-CHAMPAIGN

app.illinois.edu

[FEATURES](#)

[HELP](#)

[BLOG](#)

[ABOUT](#)

THE ILLINOIS APP

YOUR COMPANION TO THE UNIVERSITY OF ILLINOIS



FAQS

QUESTIONS ABOUT BUILDING ACCESS



Q: WHERE DO I FIND THE BUILDING ACCESS OPTION IN THE ILLINOIS APP?



Q: WHY IS MY BUILDING ENTRY DENIED? I HAVE SUBMITTED A VACCINATION RECORD TO MCKINLEY. (OR) I AM UP TO DATE WITH MY TESTS.



Q: HOW OFTEN DOES THE BUILDING ACCESS STATUS GET UPDATED?



Q: WHAT PERSONAL INFORMATION IS COLLECTED BY THE ILLINOIS APP?



Q: WHAT CRITERIA ARE USED TO DETERMINE BUILDING ACCESS STATUS?



Q: CAN I ACCESS MY HEALTH HISTORY IN THE ILLINOIS APP?

A dark blue background with a network diagram consisting of several dark blue circular nodes connected by thin, light blue lines. The nodes are arranged in a roughly circular pattern, with some lines crossing to form a complex web.

HOW CAN YOU PARTICIPATE?

wcsulliv@illinois.edu

mrfenner@illinois.edu

courtney@illinois.edu

We exist to enhance human capabilities; to create healthier, safer, more equitable, sustainable places; to foster better decision-making; and to fuel innovation.

The background features a dark blue field with a network of thin, light blue lines connecting several circular nodes. The nodes are arranged in a roughly triangular pattern, with some nodes having multiple connections to other nodes, creating a web-like structure.

I ROKWIRE